

The logo for Bury Council, featuring the word "BURY" in yellow capital letters inside a dark blue speech bubble shape. Below the speech bubble, the slogan "LET'S Do It!" is written in white capital letters.

BURY

LET'S Do It!

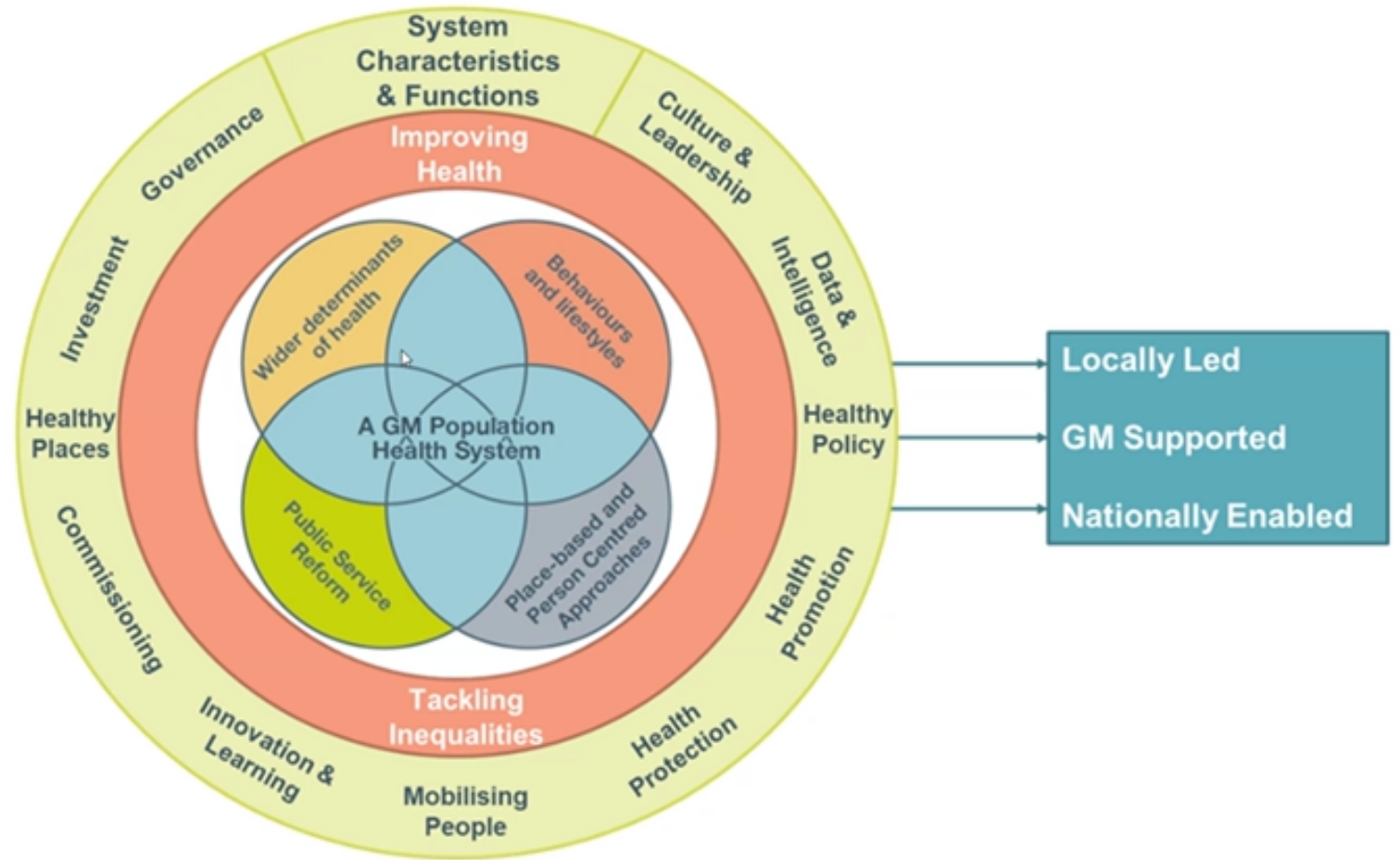
Health and Wellbeing Outcomes Framework

Health and Wellbeing Board March 2024

Jon Hobday – Director of Public Health

Context

GM Population Health Model



BURY
LET'S Do It!

BURY
LET'S Do It!

Challenge

- How do we ensure we pick the right indicators?
- Outcomes are influenced by a range of factors
- Outcomes are difficult to improve without investment
- Outcomes cut across several boards / partnerships

Wider determinants

BURY
LET'S Do It!

Indicator	Age	Sex	Period	Unit	Value	Bury Trend (based on 5 recent data points)	Value (Calderdale)	Value (Stockport)	Value (England)	England trend (based on 5 recent data points)	Target (based on Calderdale or if already better improve by 5%)
Employment											
Youth not in employment, education or training (NEET)	16-17 yrs	Persons	2022/23	%	3.9	→	4.4	3.3	5.2	↓	3.7
Percentage of people in employment	16-64 yrs	Persons	2022/23	%	81.6	→	74	80.7	75.7	→	85.7
Economic inactivity rate	16-64 yrs	Persons	2021/22	%	20.5	→	23.7	20.1	21.2	→	19.5
The percentage of the population with a physical or mental long term health condition in employment	16-64 yrs	Persons	2022/23	%	69.9	Not enough data to calculate	64.3	74.8	65.5	Not enough data to calculate	73.4
Gap in the employment rate between those with a physical or mental long term health condition (aged 16 to 64) and the overall employment rate	16-64 yrs	Persons	2022/23	Percentage points	11.7	Not enough data to calculate	9.7	5.9	9.9	Not enough data to calculate	9.7
Housing											
Fuel poverty (low income, low energy efficiency methodology)	Not applicable	Not applicable	2021	%	13.4	Not enough data to calculate	17.1	12.2	13.1	Not enough data to calculate	12.7
Children and Young People											
Number of children in absolute low income families (under 16s)	<16 yrs	Persons	2021/22	%	16.1	Not enough data to calculate	17.2	10.7	15.3	Not enough data to calculate	15.3
Number of children in relative low income families (under 16s)	<16 yrs	Persons	2021/22	%	22.8	Not enough data to calculate	22.2	15.8	19.9	Not enough data to calculate	22.2
Homelessness - households with dependent children owed a duty under the Homelessness Reduction Act	Not applicable	Not applicable	2021/22	crude rate/1000	12.7	Not enough data to calculate	9.1	9.7	14.4	Not enough data to calculate	9.1
Children in care	<18 yrs	Persons	2022	crude rate/10,000	82	Not enough data to calculate	75	72	70	Not enough data to calculate	75
Children who are the subject of a Child Protection Plan – rate per 10,000	<18 yrs	Persons	2020/21	crude rate/10,000	46.5	→	39.8	24.4	41.4	↓	39.8
Child Poverty, Income deprivation affecting children index (IDACI)	<16 yrs	Persons	2019	%	16.9	Not enough data to calculate	19.6	14.6	17.1	Not enough data to calculate	16.1

Behaviour and Lifestyle

BURY
LET'S Do It!

Indicator	Age	Sex	Period	Unit	Value	Bury Trend (based on 5 recent data points)	Value (Calderdale)	Value (Stockport)	Value (England)	England trend (based on 5 recent data points)	Target (based on Calderdale or if already better improve by 5%)
Obesity											
Percentage of adults (aged 18 plus) classified as overweight or obese	18+ yrs	Persons	2021/22	%	64.9	Not enough data to calculate	65.4	65.6	63.8	Not enough data to calculate	61.7
Alcohol											
Adults in treatment - alcohol only	>18 yrs	Persons	2022/23	%	32.0	Not available	28.0	36.0	30.0	Not available	28.0
Successful completions - alcohol only	>18 yrs	Persons	2022/23	%	58.5	Not available	75.2	48.5	57.5	Not available	75.2
Alcohol specific mortality (Directly standardised rate per 100,000)	All	Persons	2017-19	per 100,000	12.9	Not enough data to calculate	15.1	15.7	10.9	Not enough data to calculate	12
Under 75 mortality rate from alcoholic liver disease - 3 years range (Directly standardised rate per 100,000)	<75 yrs	Persons	2017-19	per 100,000	11.9	Not enough data to calculate	12.7	15.1	9.1	Not enough data to calculate	11
Admissions for alcohol-related conditions (Broad) (Directly standardised rate per 100,000)	All	Persons	2021/22	per 100,000	1,587	Not enough data to calculate	1,781	1,891	1,734	Not enough data to calculate	1508
Drugs											
Adults in treatment - opiate	>18 yrs	Persons	2022/23	%	47.0	Not available	47.0	39.0	49.0	Not available	49.4
Adults in treatment - non-opiate only	>18 yrs	Persons	2022/23	%	10.0	Not available	14.0	10.0	10.0	Not available	14.0
Adults in treatment - non-opiate & alcohol	>18 yrs	Persons	2022/23	%	11.0	Not available	11.0	15.0	12.0	Not available	11.6
Successful completions - opiate	>18 yrs	Persons	2022/23	%	15.6	Not available	39.0	16.8	22.6	Not available	39.0
Successful completions - non-opiate only	>18 yrs	Persons	2022/23	%	43.1	Not available	68.0	46.0	51.3	Not available	68.0
Successful completions - non-opiate & alcohol	>18 yrs	Persons	2022/23	%	45.8	Not available	71.0	48.4	48.7	Not available	71.0
Children and Young People											
Obesity in early pregnancy	Not applicable	Female	2018/19	%	22.6	Not enough data to calculate	24.9	20.1	22.1	Not enough data to calculate	21.5
Reception: Prevalence of overweight (including obesity)	4-5 yrs	Persons	2022/23	%	21.9	↔	19.2	20.8	21.3	↕	19.2
Year 5: Prevalence of overweight (including obesity)	10-11 yrs	Persons	2022/23	%	39.4	↑	38.3	34.2	36.6	↕	38.3
Baby's first feed breastmilk	Newborn	Persons	2020/21	%	57.1	Not enough data to calculate	72.4	73.1	71.7	Not enough data to calculate	72.4
Breast feeding prevalence at 6-8 weeks	6-8 weeks	Persons	2018/19	%	42.5	Not enough data to calculate	Not available	48.8	46.2	Not enough data to calculate	44.6
Under 16s conception rate (crude rate per 1,000)	<16 yrs	Female	2021	Per 1,000	3.3	Not enough data to calculate	2.1	1	2.1	Not enough data to calculate	2.1
Population vaccination coverage: Dtap IPV Hib (1 year old)	1 yr	Persons	2022/23	%	92.1	↔	91.7	95.2	91.8	↕	>95
Population vaccination coverage: Dtap IPV Hib (2 years old)	2 yr	Persons	2022/23	%	93.8	↕	92.4	95.9	92.6	↕	>95
MMR for one dose (5 years old)	5 yr	Persons	2022/23	%	93.7	↕	93.9	96.2	92.5	↕	>95
MMR for two doses (5 years old)	5 yr	Persons	2022/23	%	83.3	↕	86.9	91.3	84.5	↕	>95

Public Service Reform

BURY
LET'S Do It!

Indicator	Age	Sex	Period	Unit	Value	Bury Trend (based on 5 recent data points)	Value (Calderdale)	Value (Stockport)	Value (England)	England trend (based on 5 recent data points)	Target (based on Calderdale or if already better improve by 5%)
Coronary Heart Disease (CHD)											
CHD: QOF prevalence (all ages) actual	All	Persons	2022/23	%	3.1	↓	3.4	3.5	3	↓	2.9
Under 75 mortality rate from heart disease (Directly standardised rate per 100,000)	<75 yrs	Persons	2021	Per 100,000	44.9	Not enough data to calculate	54.5	43.2	40.7	Not enough data to calculate	42.7
Proportion on a long term condition register who have had a check up in the last 12 months (CHD)											
Last BP reading of patients (<80 yrs, with CHD) in the last 12 months is <= 140/90 mmHg (denominator incl. PCAs)	<80 yrs	Persons	2021/22	%	58.9	Not available	63.8	72.2	67.2	Not available	63.8
Last BP reading of patients (80+ yrs, with CHD) in the last 12 months is <= 150/90 mmHg (denominator incl. PCAs)	80+ yrs	Persons	2021/22	%	69.5	Not available	71.9	82.2	77.3	Not available	71.9
Diabetes											
Diabetes: QOF prevalence (17+ yrs)	17+ yrs	Persons	2022/23	%	7.7	→	8.1	7.3	7.5	↑	7.3
Proportion on a long term condition register who have had a check up in the last 12 months (Diabetes)											
Last BP in patients with diabetes is <= 140/90 mmHg (denominator incl. PCAs)	17+ yrs	Persons	2021/22	%	61.6	Not available	48.9	60.3	55.6	Not available	54.2
Mental Health											
Depression: QOF prevalence (18+ yrs)	18+ yrs	Persons	2020/21	%	8	↑	15.8	15.7	12.3	↑	7.6
Proportion on a long term condition register who have had a check up in the last 12 months (Mental Health)											
Record of a BP check in the last 12 months for patients on the MH register	All	Persons	2020/21	%	39.1	↓	43.9	65.4	55.4	↓	43.9
Hypertension											
Hypertension: QOF prevalence (all ages)	All	Persons	2021/22	%	13.7	↓	13.9	14.9	14	→	13.0
Proportion on a long term condition register who have had a check up in the last 12 months (Hypertension)											
Patients (aged 45+) who have a record of blood pressure in the last 5 years	45+ yrs	Persons	2021/22	%	84.1	↓	85.2	86.4	85	↓	85.2
Last BP reading of patients (<80 yrs, with hypertension), in the last 12 months is <= 140/90 mmHg (denominator incl. PCAs)	<80	Persons	2021/22	%	51.8	Not enough data to calculate	55.3	61.1	57.2	Not enough data to calculate	55.3
Last BP reading of patients (80+ yrs, with hypertension), in the last 12 months is <= 150/90 mmHg	80+ yrs	Persons	2021/22	%	66.2	Not enough data to calculate	70.4	77.4	72.2	Not enough data to calculate	70.4
Liver Disease											
Under 75 mortality rate from liver disease	<75 yrs	Persons	2022	Per 100,000	33.8	→	25.9	25.7	21.4	↑	25.9
Screening											
Breast screening coverage	53-70 yrs	Females	2023	%	69.2	↓	64.4	67.9	66.2	↓	72.7
Cervical screening coverage (age 50-64)	50-64 yrs	Females	2023	%	72.7	↓	79.2	77.9	74.4	↓	76.2
Bowel screening coverage	60-74 yrs	Persons	2023	%	70.9	↑	73.9	73.3	72	↓	73.9
Two week wait referrals (indirectly age-sex-standardised referral ratio)	All	Persons	2021/22	Per 100	100	Not enough data to calculate	101	118	100	Not enough data to calculate	101

Marmot Beacon Indicators

BURY
LET'S Do It!

Social determinants of Health	Indicators	Age	Sex	Period	Unit	Value (Bury)	Bury Trend (based on 5 recent data points)	Value (Calderdale)	Value (Stockport)	Value (Greater Manchester)	Value (England)	England trend (based on 5 recent data points)
Social determinants of Health Inequalities in Bury	Early years, children and young people											
	School readiness: percentage of children achieving a good level of development at the end of Reception	5 years	Persons	2022/23	%	65.7	Not enough data to calculate	66.7	67.8	63.3	67.2	Not enough data to calculate
	Psychological Wellbeing	Sourcing data										
	Pupil absences	5-15 years	Persons	2021/22	%	7.1	↔	7.4	7.2	Not Available	7.6	↔
Work and employment	Average Attainment 8 Score among children eligible for Free School Meals (FSM)	15-16 years	Persons	2020/21	Score	37.9	Not enough data to calculate	41.5	39.6	Not Available	39.1	Not enough data to calculate
	16 to 17 year olds not in education, employment or training (NEET) or whose activity is not known	16-17 yrs	Persons	2022/23	%	3.9	↔	4.4	3.3	5.7	5.2	↓
	Unemployment rate (model-based)	16+ years	Persons	2022/23	%	3		3.3	3.2	4.3	3.8	Not enough data to calculate
	Low earning key workers	Will calculate based on estimates from ONS using the 2010 Standard Occupational Classification (SOC) and the 2007 Standard Industrial Classification of Economic										
Income poverty and debt	Proportion of all employment in non-permanent employment	16-64 years	Persons	2021	%	4.8	Not enough data to calculate	3.3	5.8	5	4.8	Not enough data to calculate
	Number of children in relative low income families (under 16s)	<16 yrs	Persons	2021/22	%	22.8	Not enough data to calculate	22.2	15.8	19.3	19.9	Not enough data to calculate
	Proportion of residents reporting difficulty dealing with their current levels of debt	Not Available	Persons	2023	%	42	Not enough data to calculate		41			
Housing, transport and the environment	Housing affordability ratio: Ratio of house price to earnings	All ages	Persons	2023	Ratio	7.64	Not enough data to calculate	5.27	9.02	Not Available	8.28	Not enough data to calculate
	Homelessness: households in temporary accommodation	Not Applicable	Not Applicable	2022/23	Crude rate per 1000	1.3	Not enough data to calculate	0.7	0.9	Not Available	4.2	Not enough data to calculate
	Average public transport payments per mile traveled	Not Available										
	Air pollution: fine particulate matter (new method - concentrations of total PM2.5)	Not Applicable	Not Applicable	2021	Mean µg/m3	7.1	Not enough data to calculate	5.6	7.6	Not Available	7.4	Not enough data to calculate
Communities and place	Crime rate per 1000 population	Calculated from raw data for Bury from GMP		2023/24	Crude rate per 1000	82						
	People with different backgrounds get on well together	Not Available										
Public Health	Antisocial behaviour	Sourcing data										
	Proportion of residents reporting bad or very bad health (age-standardised)	All ages	Persons	2021	%	5.8	Not enough data to calculate	5.7	5.2	Not Available	5.3	Not enough data to calculate
	Self reported wellbeing: people with a low satisfaction score	16+ years	Persons	2022/23	%	4.9	Not enough data to calculate	9.4	3.9	Not Available	5.6	Not enough data to calculate
	Numbers on NHS waiting list for 18 weeks	Sourcing data										
	Emergency readmissions for ambulatory sensitive conditions	Sourcing data										
Public Health	Percentage of adults (aged 18 plus) classified as overweight or obese	18+ yrs	Persons	2021/22	%	64.9	Not enough data to calculate	65.4	65.6	66.8	63.8	Not enough data to calculate
	Smoking in routine and manual occupations 18-64 (current smokers (APS1))	18-64 years	Persons	2022	%	17.1	Not enough data to calculate	19.7	27.9	Not Available	22.6	Not enough data to calculate

Wider determinants

Performing Positively

- % Not in Education, Employment or Training (NEET)
- % people in employment
- Rate of Homelessness – (household with dependent children owed a duty under the Homelessness Reduction Act)

Areas for improvement

- Number of children living in low-income families (under 16s)
- Children in care



BURY
LET'S Do It!

Behaviour and Lifestyle

Performing Positively

- Admissions for alcohol related harm
- Smoking prevalence in routine and manual workers

Areas for improvement

- Smoking attributable mortality
- Obesity at year 6
- MMR for 2 doses

Public Service Reform

BURY

LET'S Do It!

Performing Positively

- Depression levels (on QOF)
- Breast screening coverage

Areas for improvement

- % on a CHD register who have had a check-up in the last 12 months with a BP of less than 140/90
- Cervical screening coverage
- % of those on the MH registers who have had their BP checked in the last 12 months

BURY
LET'S Do It!

Marmot Indicators

Performing Positively

- NEET
- Pupil absences

Areas for improvement

- Number of children living in low-income families

BURY
LET'S Do It!

Steps to reduce inequalities

- Use Health and Wellbeing Board as standing commission on health inequalities
- Use population health delivery partnership to drive the activity
- Have a robust implementation plan
- Have a detailed outcomes framework (aligned with Marmot towns 24 indicators)
- Use the wider network community to share and grow good practice